



## Fact Sheet - Spiling

**Willow spiling** is the most common and best known method for tackling the erosion of banks along the lake sides. Erosion is not something you might expect to find along the banks of a quiet lake but visit the park on any day when there is a strong wind blowing and you will see waves lapping along the shoreline. They may look pretty and gentle but they exert a power on the banks that undermines them and causes them to fall into the lake.

The use of coppiced willow branches that are interwoven into a fence can create a living structure that has the ability to reduce wave power, thereby protecting the bank. Whether the willow starts to sprout depends on when it is coppiced and how quickly it is used.



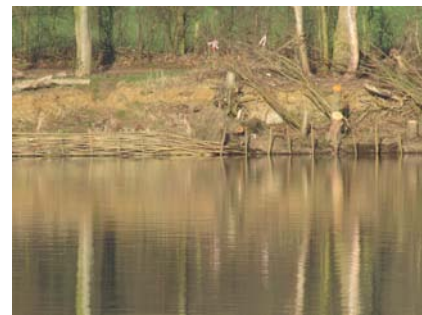
1. Coppiced willow cut and ready use.



2. Willow stakes driven into the lake bed where the bank is threatened by erosion from wave action.



3. Willow branches woven to create a natural fence that removes wave energy.



4. Spiling that is part finished (right) and finished (left).



5. Coppiced willow in the foreground with recently completed spiling in the background.



6. Mature spiling where the willow has sprouted and grown into a natural barrier.